

Artisan 60



Port Hawkesbury is proud to announce the release of our newest product, Artisan 60

As the leader in supercalendered paper in North America, we are pleased to offer the only 60# basis weight SC paper on the market.

This paper is great for magazines and catalogs, retail inserts, or direct mail and competes with coated groundwood grades on cost, brightness and gloss.

Here are a few reasons to check out Artisan 60#

- The Artisan 60 is a cost-effective alternative to coated groundwood grades.
- The smooth surface and solid sheet construction show a “glossier” surface, similar to coated groundwood sheets.
- Our SC grades do not use calcium carbonate which is found in most coated papers. Calcium carbonate can cause premature pilling and, without it, running our SC papers may result in fewer blanket washes and improved runnability.
- Thanks to the superior surface, printers may be able to use less heat through the driers. This means the sheet is less likely to show fluting.
- Our excellent roll build allows sheets to travel through the press without continuous register or compensatory movement.

[Learn more about Artisan 60 on our website](#)



Learn more about Port Hawkesbury Paper's Sustainability Efforts

At Port Hawkesbury Paper, we have made a commitment to our community and to the sustainability of our operations from an environmental, safety, economic, and social perspective. These values are crucial to our business, and we believe in communicating our progress to our employees, customers, local community and stakeholders.

Our latest Sustainability Brochure outlines our key measurements on forest management, environmental results and processes, and our commitment to safety. As the largest industrial employer in Cape Breton, we strive to be transparent

and provide our community with more information about who we are at Port Hawkesbury Paper.

[Click here to view the Sustainability Brochure](#)

Woodlands Annual Monitoring Report

Since 2002, The mill has produced reports on the safety, environmental, and forest management progress of our Woodlands Unit. Port Hawkesbury Paper manages 30% of the Crown land in Nova Scotia, and we believe that the responsible management of our forests is key to the long-term success of not just our business, but our community. Our Annual Monitoring Report provides a closer and in-depth look at our Woodland Unit's commitment to the safety of our employees and our environment.



The Annual Monitoring Report also provides more insight into our effectiveness monitoring program for 42 High Conservation Value Forests (HCVF), which are forest areas that have critical conservation significance.

[View our Annual Monitoring Report Here](#)

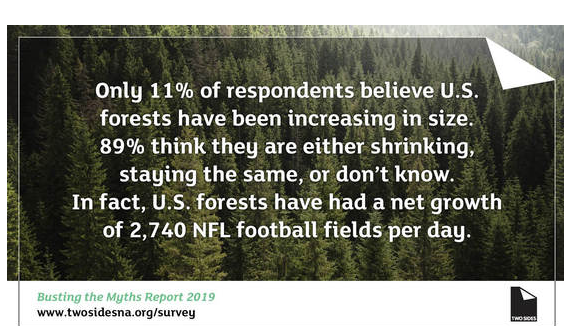


How Life Unfolds Campaign Provides Valuable Data on the Power of Print

The How Life Unfolds® Campaign provides relevant data on the benefits

of paper and paper-based packaging, reminding us how paper and packaging help us reach our goals and help keep our goods and products safe.

[Learn more about The Campaign](#)



New Research from Two Sides North America

Our partner at Two Sides North America provides fact-based research and information on the sustainability of the pulp and paper industry. Members help to dispel the myths about print and paper products and the impacts

they have on our forests, learning, health and environment. Their latest research shows that there is love for print and paper - but environmental education is needed.

[View the Latest Research](#)

Port Hawkesbury Paper
120 Pulp Mill Road
Port Hawkesbury, Nova Scotia B9A 1A1 Canada

Share this email:



[Manage](#) your preferences | [Opt out](#) using TrueRemove™

Got this as a forward? [Sign up](#) to receive our future emails.

View this email [online](#).

120 Pulp Mill Road
Port Hawkesbury, Nova Scotia | B9A1A1 CA

This email was sent to .
To continue receiving our emails, add us to your address book.

